

P103教學廚房瓦斯說明

Gas Instructions of P103 Teaching Kitchen

- 如何使用瓦斯?!
How to use gas?!



桶裝瓦斯區



嚴禁煙火



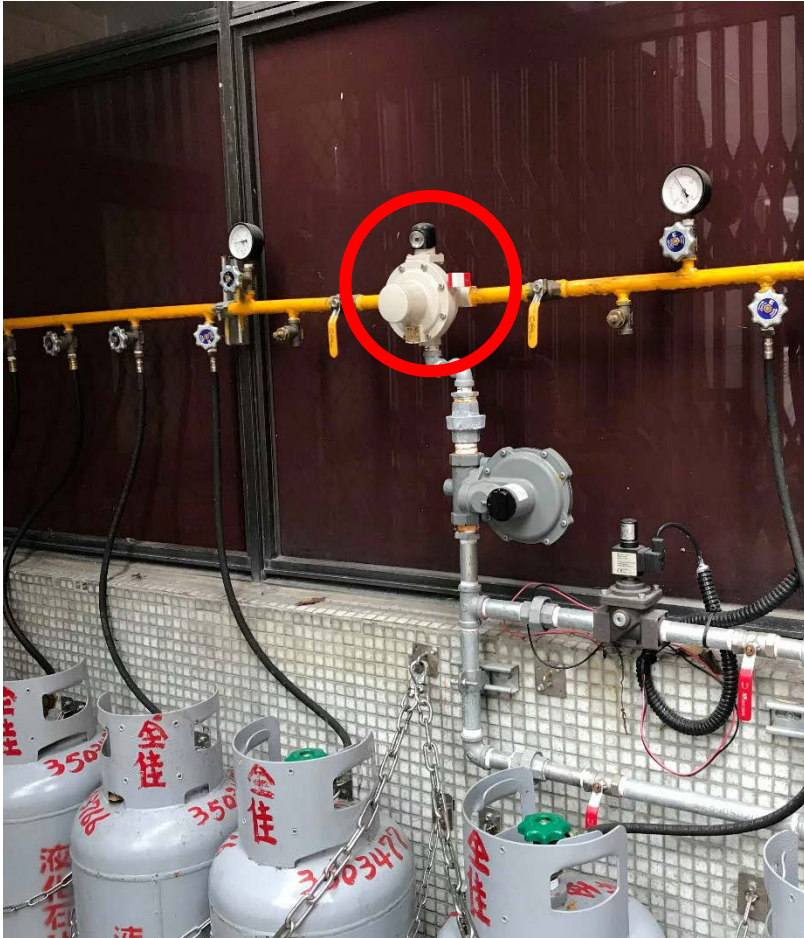
禁止吸煙

請勿隨意開啟

瓦斯間 Gas Room

首先：檢查看哪一個方向是預備和供給

Step 1 : Check which direction to look for is reserve and supply.



第2步：把這些開關轉至於水管平行。

Step 2: Turn these switch to parallel to the pipe.



第3步：根據供給的方向把那開關轉至於水管平行。
Step 3: According to the direction of supply, turn the switch to parallel to the pipe.



第4步：根據開關上的標籤往開或關的方向轉動。同時也要檢查哪一條管子連接哪一個煤氣桶。

Step 4 : Turn the switch on or off according to the label on the switch. At the same time, must also check which gas pipe is connected to which gas tank.

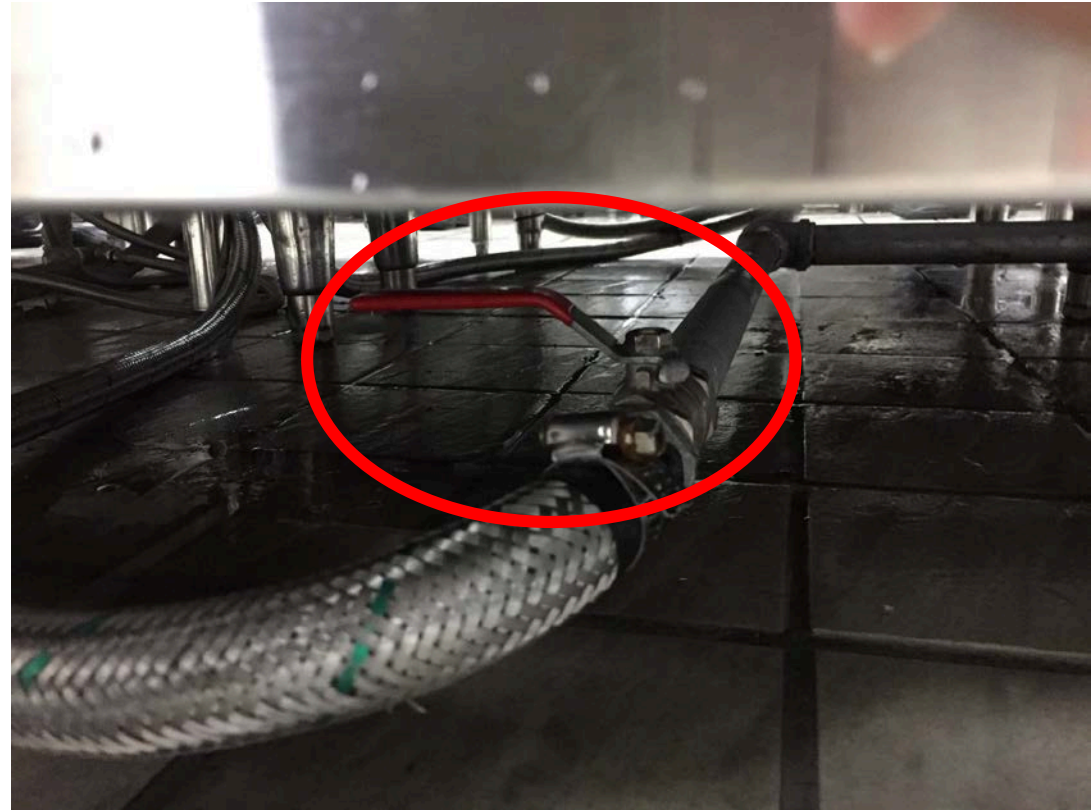


第5步：根據煤氣桶上綠色開關的標籤往開或關的方向轉動。
Step 5: Turn the switch on or off in the direction of the green switch on the gas tank.



第6步：把這些開關轉至於水管平行。

Step 6: Turn these switch to parallel to the pipe.



最後：推前再轉動你要用的火的位置。然後再按右邊的**銀色按鈕**點燃火。
Final Step: Push and turn the location of the fire you want to use. Then press the **silver button** on the right to light the fire.



銀色按鈕
Silver button

不可在瓦斯間做的事！ WARNING!

打架 Fighting



抽煙 Smoking



任何起火的動作
Any Fire Action

