

P110教學廚房瓦斯說明

Gas Instructions of P110 Teaching Kitchen

- 如何使用瓦斯?!
How to use gas?!



瓦斯間 Gas Room

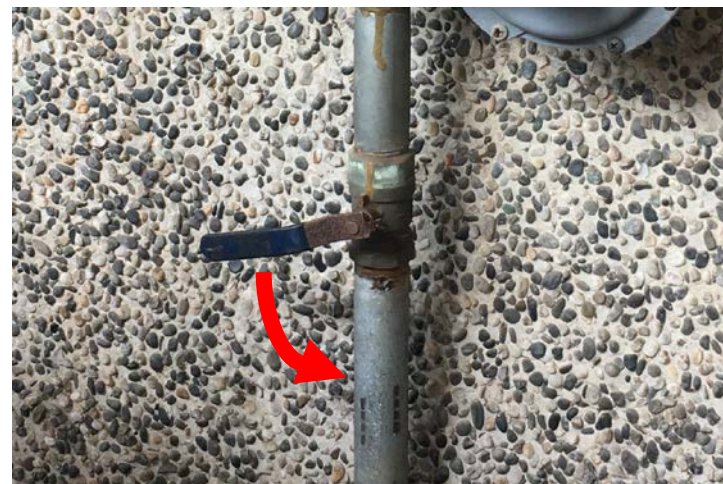
首先：檢查看哪一個方向是預備和供給

Step 1 : Check which direction to look for is **reserve** and **supply**.



第2步：把這開關轉至於水管平行。

Step 2: Turn this switch to parallel to the pipe.



第3步：根據供給的方向把那開關轉至於水管平行。

Step 3: According to the direction of supply, turn the switch to parallel to the pipe.



第4步：根據開關上的標籤往開或關的方向轉動。同時也要檢查哪一條管子連接哪一個煤氣桶。

Step 4 : Turn the switch on or off according to the label on the switch. At the same time, must also check which gas pipe is connected to which gas tank.



第5步：根據煤氣桶上綠色開關的標籤往開或關的方向轉動。
Step 5: Turn the switch on or off in the direction of the green switch on the gas tank.

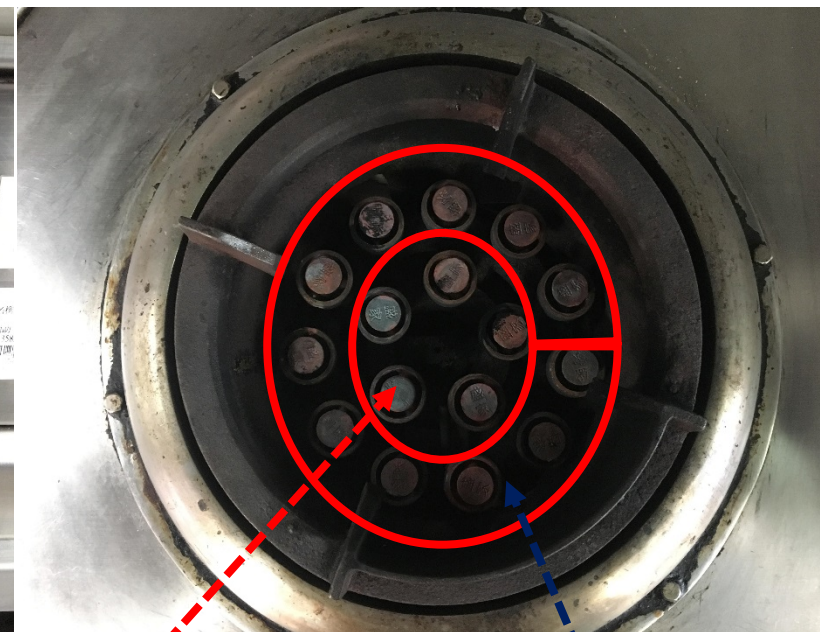


第6步：把這開關轉至於水管平行。

Step 6: Turn this switch to parallel to the pipe.



最後：先把母火轉向開，再自行決定要用外圈的火或內圈的火。
Final Step : Turn the main fire away and decide on its own to use the fire in the **Outer ring** or the fire in the **Inner ring**.



內圈
Inner ring

外圈
Outer ring

不可在瓦斯間做的事！ WARNING!

打架 Fighting



抽煙 Smoking



任何起火的動作
Any Fire Action

